

*Serving the needs of families, children, and individuals since 1923.*



**United Way  
of Greater Lafayette**

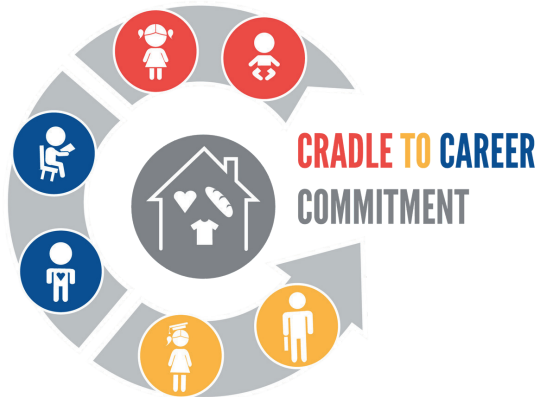
# **AT A GLANCE**

[www.uwlafayette.org](http://www.uwlafayette.org)



# CRADLE TO CAREER COMMITMENT

United Way fights for the health, education, and financial stability of every person in every community. In Greater Lafayette, that means equipping people with the tools necessary to live their best life possible from cradle to career. The Cradle to Career Commitment is a community wide effort to help people develop the skills necessary for a lifetime of positive decision making. We raise our hands not only to lead the fight but to reach out to people who need help and hope. We take on the complex challenges; the ones that are difficult to talk about and bring people together to create lasting solutions.



# COMMUNITY INVESTMENT PROCESS

Through a year long process, Community Investment Committee volunteers evaluate social service agencies and programs to determine how to invest dollars generated from the annual United Way campaign.

In addition to focusing on the Cradle to Career Commitment, a Strategic Priority RFP focuses on specific areas of need including:

- **Mental Health & Substance Use**
- **Youth Development**
- **Affordable Housing**



*[visit www.uwlafayette.org/cic](http://www.uwlafayette.org/cic) to learn more*



# KINDERGARTEN COUNTDOWN CAMP

Kindergarten Countdown Camp is a free summer camp hosted by United Way of Greater Lafayette. This camp is designed to prepare children with little to no preschool experience for their new roles as kindergarten students. The camps are taught by licensed teachers and take place in a school setting.

Since 2011, more than 2,000 students have graduated the program. In addition to serving both LSC and TSC students, the program now offers classrooms in Crawfordsville.





## READ TO SUCCEED

Read to Succeed is a reading program that invites community members to spend one hour per week in local classrooms helping children develop and improve literacy skills. We invite community members to volunteer in a classroom for one hour each week during the school year. We all have a stake in local students' success. Improving student reading skills can lead to increased school achievement. The strength of our future workforce depends on students becoming successful today. Volunteer opportunities are available in all 20 public elementary schools in Greater Lafayette.



Nearly 250 volunteers served in the 2023-2024 school year.

# VOLUNTEER ENGAGEMENT CENTER

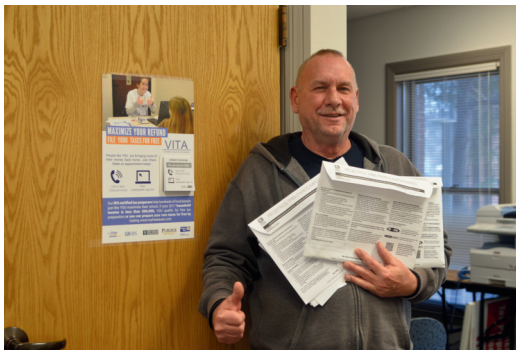
The Volunteer Engagement Center allows individuals, groups, and organizations to post volunteer opportunities throughout the year. Whether it is serving a meal or helping with a handy task, there's something for everyone!

United Way of Greater Lafayette also hosts the Volunteer Coordinator's Network to allow non-profit professionals to connect and strategize about volunteer recruitment and management.



Scan the QR code or check out featured volunteer opportunities at [www.uwlafayette.org/volunteer](http://www.uwlafayette.org/volunteer)





# VOLUNTEER INCOME TAX ASSISTANCE (VITA)

Our Volunteer Income Tax Assistance Program (VITA) helps working families and individuals in Greater Lafayette file their taxes for FREE. The VITA program offers no cost tax preparation and filing services by IRS certified volunteers to households making less than \$78,000.



Since it began in 2011, this program has saved taxpayers an estimated \$3.2 million in tax preparation fees and has served more than 14,000 clients.

To learn more visit  
[www.uwlafayette.org/mytaxes](http://www.uwlafayette.org/mytaxes).

# COMMUNITY COLLABORATIONS

The **Tippecanoe Resilience & Recovery Network (TRRN)** is a community collaboration to address substance use and mental health needs in our community. Interested members of the community can join the network to attend meetings, participate in one of the many working groups and keep informed.

To grasp the challenges confronting community members, the group charts the pathways of individuals grappling with mental health or substance use issues. They then adopt a project-oriented strategy to foster collaborations within the community, driving collective progress in addressing these complex issues.

To learn more visit [www.uwlafayette.org/trrn](http://www.uwlafayette.org/trrn).





# POVERTY SIMULATION

The Poverty Simulation is an impactful and interactive experience in which participants can begin to understand the realities of low-income families, trying to survive from month to month. The challenges represented in the Poverty Simulation are a daily struggle for many. Each participant in the simulation takes on the role of a person living in poverty. Roles are based on real family scenarios. The objective is to make ends meet, feed your family, and maintain housing for one month.

It is a simulation. Not a game.

**Interested in hosting a poverty simulation?**

Visit [www.uwlafayette.org/poverty-simulation/](http://www.uwlafayette.org/poverty-simulation/)





# PEER UNION COUNSELING

During the Peer Union Counseling Program, participants learn about an array of human service programs available in our community and how to access them. They gain valuable skills to effectively listen and communicate with others, evaluate problems, and make referrals. This course is ideal for anyone that wants to offer a compassionate “hand-up” to a coworker, student, neighbor, or friend. Participants will engage in a two hour class per week for 5 weeks. The course runs in February & March annually.

[www.uwlafayette.org/peer-union-counseling/](http://www.uwlafayette.org/peer-union-counseling/)





## AFFINITY GROUPS

When people engage with United Way, they bring their passion, skills and vision to our efforts, focusing their sights on the greater good. Together, we can accomplish far more. All of us bring our unique perspective, experience and enthusiasm to the cause, and that diversity is the wellspring of innovative solutions we need to affect positive change on a large scale.

We invite everyone to be part of the change in your community. Whether it's women, young professionals, or retirees -- our affinity groups are just one more way for you to explore the "United Way experience."



# FUNDRAISING EFFORTS



## Workplace Campaigns

Companies can give their employees the opportunity to support the United Way campaign through payroll deduction or through special events by hosting a workplace campaign.



## Individual Donors

Individuals can support the United Way Campaign in a variety of ways: by cash, check, credit card or stock gifts. Give online at [uwlafayette.org/donate](https://uwlafayette.org/donate)

We also now accept Venmo donations too @uwlafayette



## Corporate Donations

Many companies support the United Way through making a corporate donation. Some companies even offer a 1:1 match of their employee giving.

# FUNDED PARTNERS



# STAFF

## LEADERSHIP TEAM

**David Bathe**  
Chief Executive Officer

**Jennifer Million**  
Chief Operating Officer

**Amy O'Shea**  
Senior Director of Community Impact

**Reid Kapapa**  
Director of Resource Development

## FINANCE & ADMINISTRATION

**Jane Dieterle**  
Assistant Director of Finance

**Ashley Biesemeier**  
Finance & Administrative Associate

## RESOURCE DEVELOPMENT

**Janice Smith**  
Senior Donor Experience Associate

**Matt Mellady**  
Resource Development Associate

## COMMUNITY IMPACT

**Rachel Cheeseman**  
Community Impact Associate

**Kelci Fox**  
Community Impact Associate

**Alfonso Salazar**  
Labor Liaison- Engagement Associate

## MARKETING

**Kenzi Wood**  
Marketing Associate

## MONTGOMERY COUNTY

**Gina Haile**  
Area Director

## CARROLL COUNTY

**Jennifer Shook**  
Community Engagement  
Coordinator

The current staff directory can be viewed at [www.uwlafrayette.org/staff](http://www.uwlafrayette.org/staff)

updated 3/20/24

